

OPENAI

# OpenAI Models

*Which Model to Use and When*

GPT-4o

o3

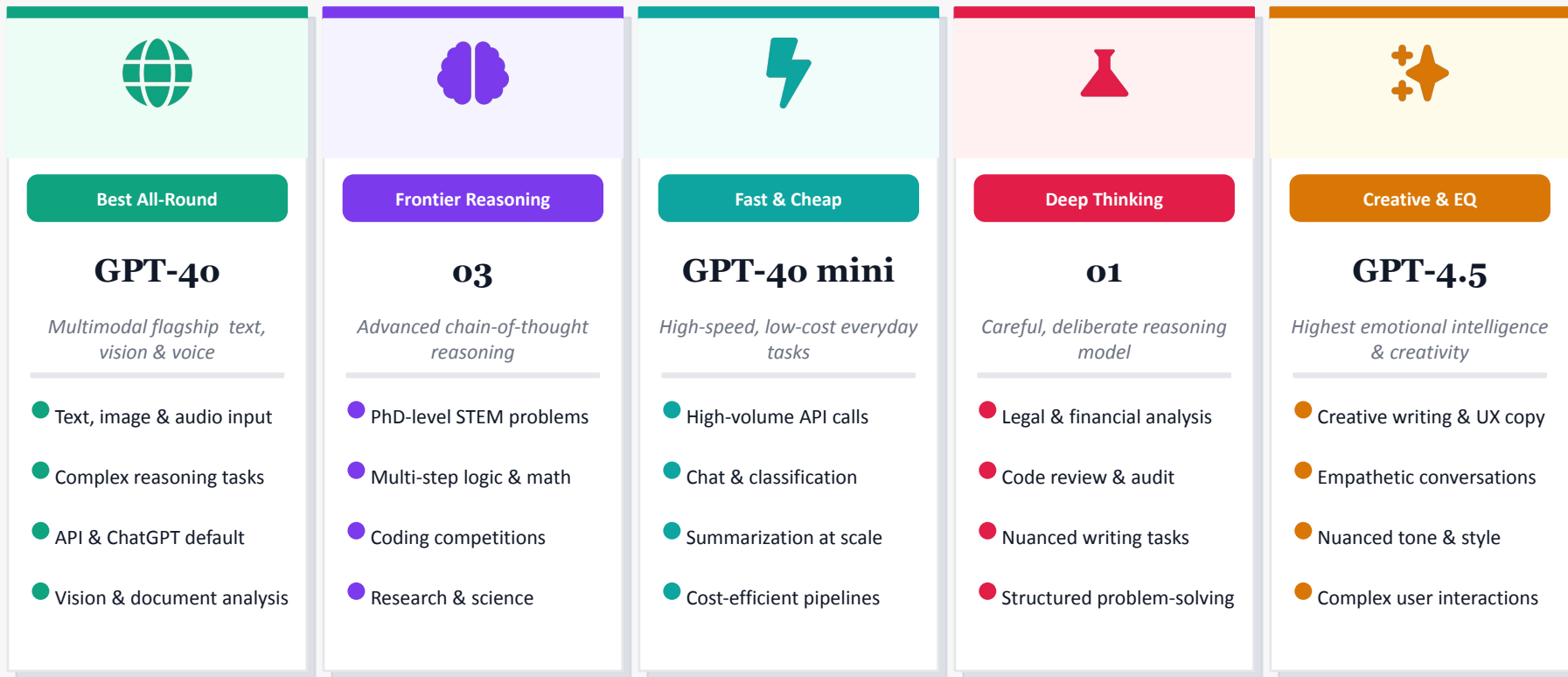
GPT-4o mini

o1

GPT-4.5

# The OpenAI Model Family

Five flagship models each tuned for a different capability–cost trade-off



# Which Model Should You Use?

Match your task to the right model [optimize for intelligence, speed, or cost](#)

USE CASE / SCENARIO	MODEL	WHY IT FITS
General Q&A, chat & vision tasks	GPT-4o	Best all-round model fast, multimodal, and highly capable
Advanced math, science & STEM research	o3	Frontier chain-of-thought reasoning for hard problems
High-volume API calls & pipelines	GPT-4o mini	80%+ cost reduction vs GPT-4o with strong everyday performance
Legal, financial & code auditing	o1	Deliberate thinking model with careful, structured output
Creative writing & brand storytelling	GPT-4.5	Highest EQ and stylistic nuance of any OpenAI model
Image & document understanding	GPT-4o	Native vision reads charts, screenshots, and PDFs inline
Agentic workflows & tool-use chains	o3	Superior multi-step planning and decision-making reliability



Pro tip: Default to GPT-4o for most tasks. Step up to o3 for hard reasoning. Use GPT-4o mini to cut costs at scale. Use o1 when you need careful deliberate output.